

# LiveCAP

## Real-Time Multilingual AI Captioning

DigiCAP®

### DATASHEET



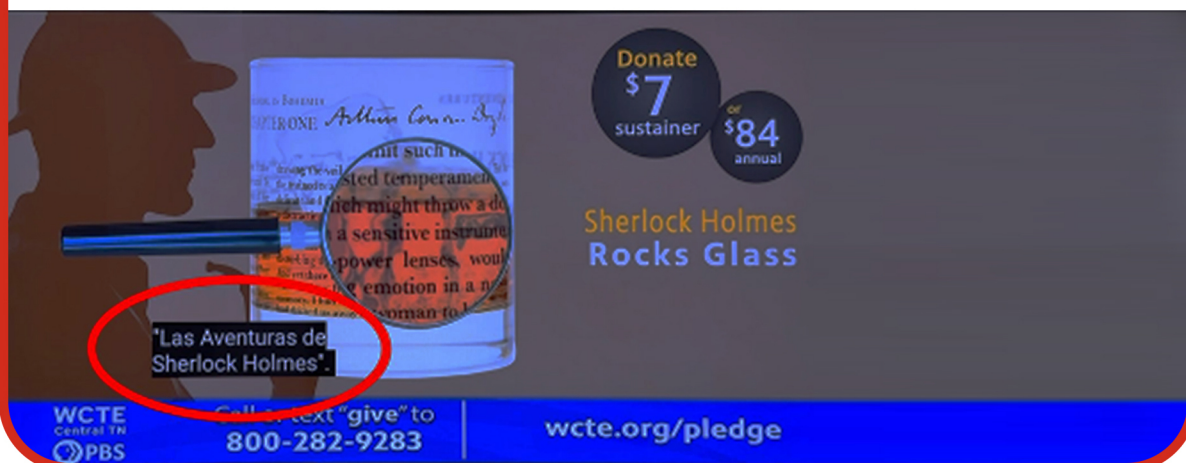
LiveCAP from DigiCAP is a cutting-edge AI-powered solution that delivers real-time, multilingual subtitles over ATSC 3.0 / TV 3.0 broadcasts. By integrating directly into the broadcast chain, LiveCAP ensures accessibility, inclusivity, and compliance with minimal infrastructure changes.

Deployed in live broadcast environments in the U.S., LiveCAP has already demonstrated low-latency performance and seamless multilingual support. For broadcasters like Broadcaster, it represents a powerful tool to reach wider audiences in Brazil's diverse linguistic landscape.

### Key Features

- **Real-time multilingual subtitles:** Automatically captures closed captions, translates them via AI, and reinserts them into the broadcast stream.
- **Seamless integration:** Works with DigiCaster and ATSC 3.0 broadcast chain, no extra hardware required.
- **AI-driven accuracy:** Powered by machine learning, trained to capture nuances and regional variations.
- **Low latency performance:** Captions synchronized closely with live speech.
- **Scalable deployment:** Supports multiple simultaneous languages and nationwide rollouts.

#### Screen grab from live transmitter feed



### Why LiveCAP Matters

Accessibility and inclusion are essential for the success of TV 3.0. Brazil's diverse linguistic landscape requires broadcasters to **serve multilingual audiences** efficiently.

*With LiveCAP, broadcasters achieve:*

- **Inclusive viewer experience:** Captions available in Portuguese, English, and even indigenous languages.
- **Regulatory compliance:** Ensures accessibility standards are met.
- **Cost-effective scaling:** AI translation delivers at a fraction of human captioning costs.
- **Enhanced viewer engagement:** Audiences can select preferred languages via their TV receiver.

## Architecture

- ✓ **Caption capture:** Ingests live closed captions from broadcast stream.
- ✓ **AI translation engine:** Cloud-based translation and processing (AWS).
- ✓ **Reinsertion:** Translated captions seamlessly reintegrated into broadcast via DigiCaster.
- ✓ **Viewer access:** Audiences switch caption languages via CC2 or equivalent receiver functions.

## Inputs & Outputs

- ✓ **Inputs:** Closed captions from live broadcast feed.
- ✓ **Outputs:** AI-translated captions reinserted into ATSC 3.0 stream.
- ✓ **Viewer access:** Multilingual captions selectable directly on compatible TV sets.

## What This Means for Broadcaster

By adopting LiveCAP, Broadcaster can:

- **Reach broader audiences:** Inclusive access for multilingual households.
- **Simplify accessibility:** Effortless compliance with captioning requirements.
- **Scale efficiently:** Nationwide rollout without major infrastructure investment.
- **Demonstrate innovation:** Reinforce Globo's leadership in TV 3.0 services ahead of the **2026 World Cup**.

## Specifications

- **Standards:** ATSC 3.0 compatible, CC2 support.
- **Languages supported:** Portuguese, English, Spanish, and expandable to indigenous/local languages.
- **Latency:** Low-latency AI processing for real-time synchronization.
- **Deployment:** Cloud-based AI engine integrated with DigiCaster.
- **User interface:** Viewer language selection via TV menu (no hardware needed).

## Security

- **Encrypted cloud processing** ensures secure handling of caption data.
- Built-in compliance with accessibility regulations.

## Support

LiveCAP is supported by DigiCAP's **24/7 global engineering team**, providing updates for AI translation models, language packs, and ATSC 3.0 / TV 3.0 standards alignment.



Smart & Reliable Partner  
**DigiCAP Co.,Ltd.**

- ☎ +82. 2. 3477. 2101
- 🌐 [www.digicap.tv](http://www.digicap.tv)
- 📠 +82. 2. 3477. 2102
- 📍 D&C CAMPUS, 11, Magokjungang 8-ro 7-gil, Gangseo-gu, Seoul, Korea