

# SRT Transceiver

Secure & Flexible STL Transport



## DATASHEET



The SRT Transceiver from DigiCAP is a highly flexible and scalable solution for the secure routing of STL (Studio-to-Transmitter Link) streams across diverse IP networks. It acts as a protocol bridge, enabling broadcasters to transmit ATSC 3.0 STLTP reliably across managed or unmanaged networks with full redundancy.

For broadcasters like Broadcaster, the SRT Transceiver provides a cost-effective way to extend STLTP signals, support multiple destinations, and guarantee robust, low-latency transport in hybrid network environments.

## Key Features

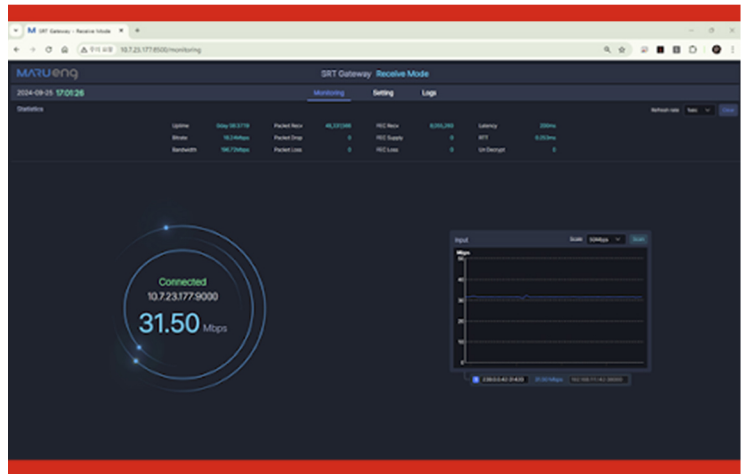
- **Protocol conversion:** Seamless bridging between STLTP and SRT for reliable transport.
- **Multi-channel support:** Distribute STL streams to one or multiple destinations.
- **Secure transport:** Encryption and error correction ensure data integrity.
- **Flexible deployment:** Runs on software platforms, compatible with diverse IT environments.

## Why SRT Transceiver Matters

In nationwide rollouts like Brazil's TV 3.0, broadcasters must extend STLTP across heterogeneous networks without compromising **security, quality, or latency.**

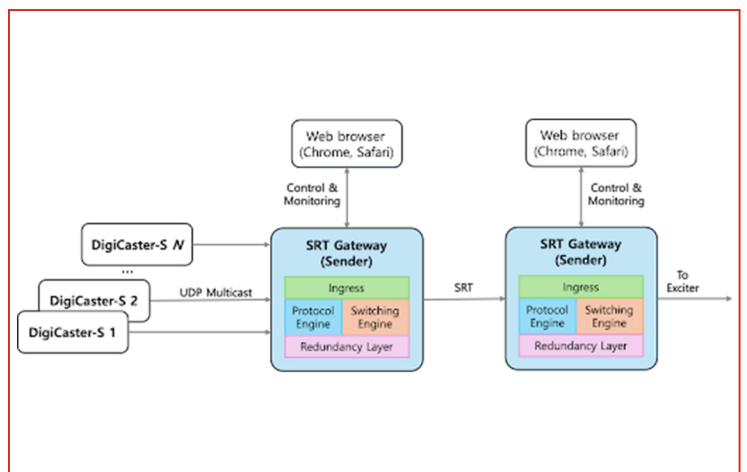
*SRT Transceiver provides:*

- **Operational flexibility** connect sites over both private and public IP networks.
- **Cost-efficiency** eliminates the need for expensive dedicated STL circuits.
- **Reliability** built-in error correction and redundancy for uninterrupted delivery.
- **Future-readiness** scalable for expanding station networks and evolving transmission needs.



## Architecture

- ✓ **Ingress:** Accepts STLTP streams from DigiCaster or headend systems.
- ✓ **Protocol engine:** Converts STLTP into SRT or other supported transport profiles.
- ✓ **Distribution:** Routes STL streams securely to multiple transmitter sites.
- ✓ **Redundancy layer:** Supports FEC and multiple simultaneous outputs for reliability.



## Inputs & Outputs

- ✓ **Inputs:** STLTP streams from DigiCaster.
- ✓ **Outputs:** STLTP over SRT, with optional FEC redundancy.
- ✓ **Multi-destination routing:** One-to-many signal distribution.

## Security

- **Encrypted SRT transport** for secure STL over public networks.
- **Error correction** via FEC ensures uninterrupted service.
- Compatible with redundancy models for fail-safe operations.

## What This Means for Broadcaster

By adopting SRT Transceiver, Broadcaster can:

- **Extend STLTP nationwide** using both managed and unmanaged IP networks.
- **Guarantee reliability** with FEC and multi-channel redundancy.
- **Save costs** by reducing dependence on dedicated STL lines.
- **Support flexibility** with one-to-many routing for affiliates.

This ensures Globo can **securely and efficiently deliver STLTP streams** to its growing network of affiliates, critical for the **TV 3.0 national rollout**.

## Specifications

- **Standards support:** ATSC 3.0 STLTP (A/324), SRT protocol.
- **Channels:** Supports multi-channel STLTP + FEC transmission.
- **Routing:** Point-to-point or one-to-many distribution.
- **Deployment:** Software-based, runs on COTS or virtualized environments.
- **Security:** Encryption and FEC for transport protection.

## Support

The SRT Transceiver is backed by DigiCAP's **24/7 global support** with expertise in STLTP and ATSC 3.0 delivery, ensuring Globo's STL operations are resilient, secure, and scalable.



Smart & Reliable Partner  
**DigiCAP Co.,Ltd.**

- ☎ +82. 2. 3477. 2101
- 🌐 [www.digicap.tv](http://www.digicap.tv)
- 📠 +82. 2. 3477. 2102
- 📍 D&C CAMPUS, 11, Magokjungang 8-ro  
7-gil, Gangseo-gu, Seoul, Korea